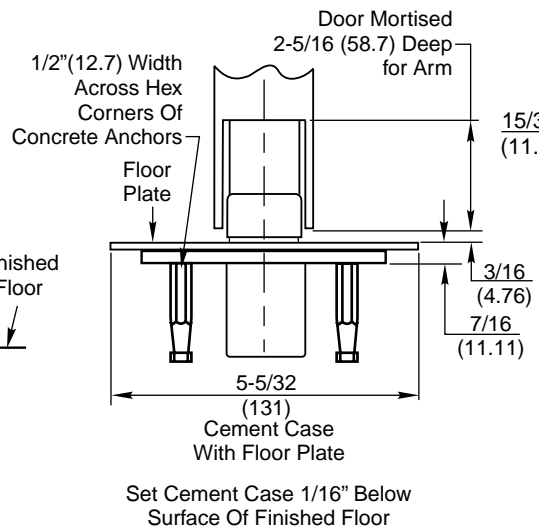
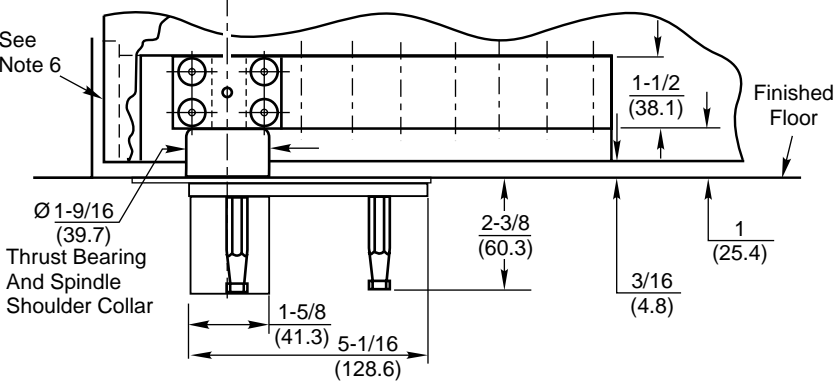
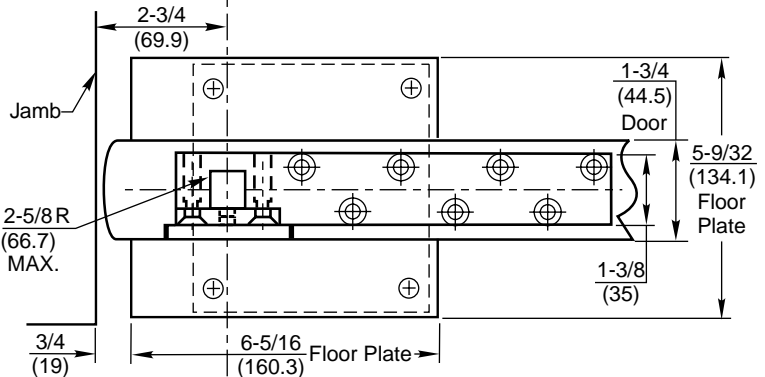
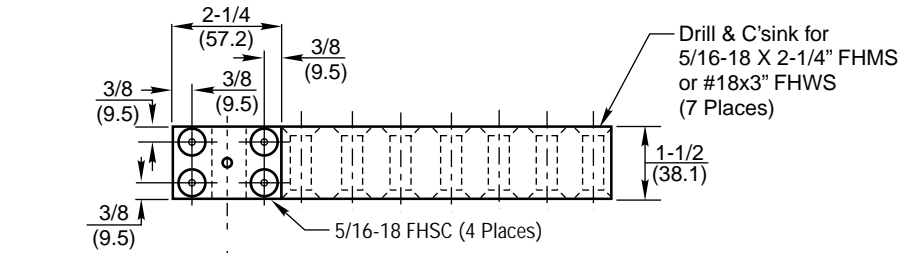
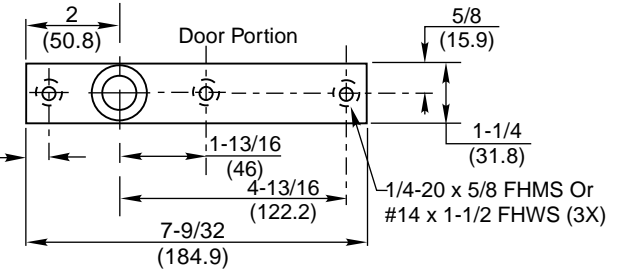
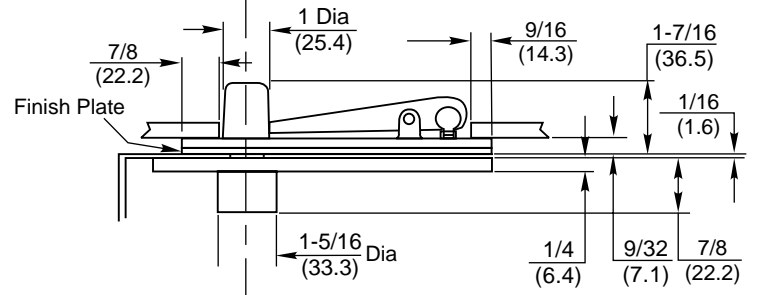
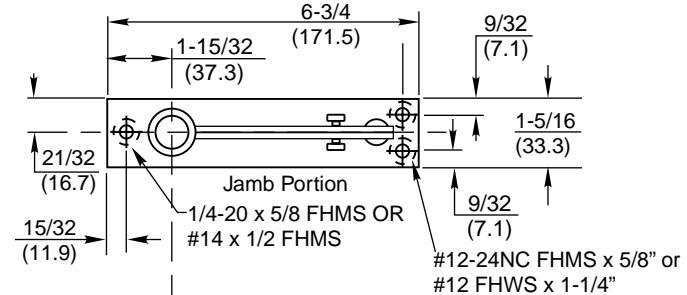


**587 ARM
(NON-HANDED)**



H340 Top Pivot Shown With 11/16" Dia. Pin Engaged



- Notes:**
1. Do not scale drawing.
 2. Dimensions given in inches (mm).
 3. Suitable reinforcing by others.
 4. Rixson designed threshold available on request
 5. Door must have removable panel to allow tightening of arm (by others). Panel must be on inside of door.
 6. Drill and tap for #8-32 machine screw, centered (screw by others).

**H117-3/4 Pivot Set x 587 Arm
Center Hung for Heavy Doors
For 1-3/4" Thick Doors**

RIXSONTM
Rixson Specialty Door Controls
www.rixson.com
TEMPLATE NUMBER **PS30120** DATE **11-06**